



La Résidence Cité Nord Abatta

Présentation Du Projet

Cité Nord Abatta est un projet exceptionnel, mixtes située à la Riviera Abatta .

Elle se compose de **6 blocs** dont :

- **6 blocs d'appartements**
- **D' Espaces commerciaux**
(Magasins/ Showroom)
- **2 Sous sols de parking**
- **Penthouses**
- **Piscine commune**
- **Salle de sport commune**
- **Espaces verts**
- **Livraison Dans 4 ans et demi**



Situation Géographique



Riviera - Abatta



Cite Nord Abatta se situe juste en face de l'entrée du parc Dahlia Fleur.

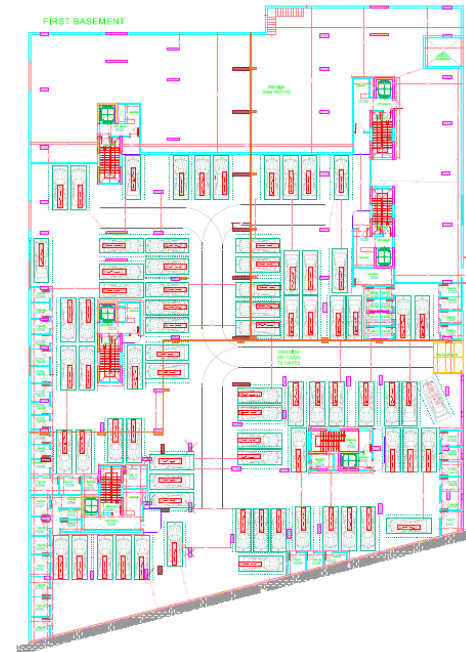


Plans & Surfaces

Les Sous-sols

Le Projet contient 2 sous-sols

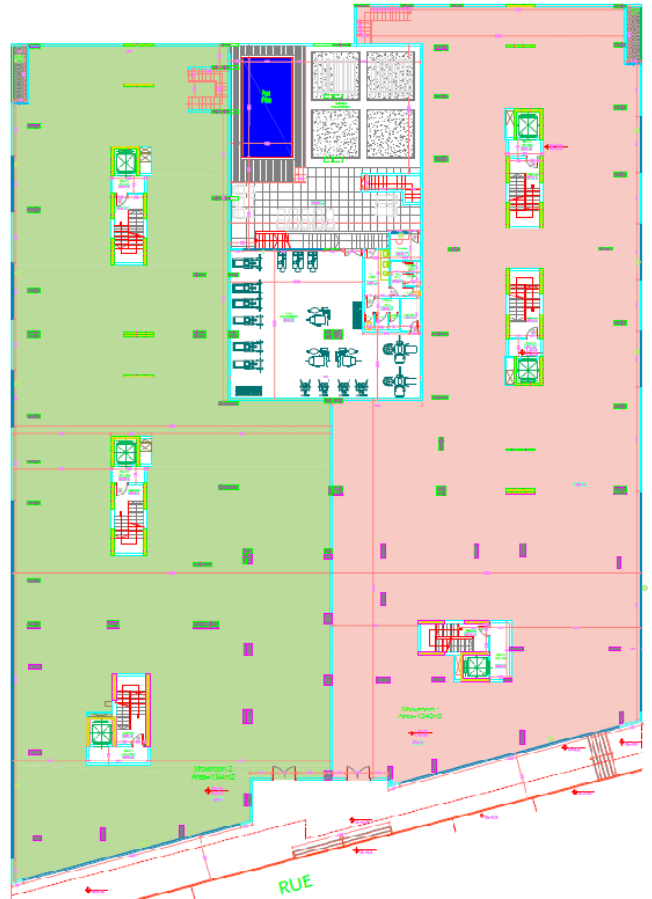
- **Sous-sol 2:**
 - 100 places de parking
 - 56 caves
- **Sous-sol 1:**
 - 75 places de parking
 - 58 caves
 - 2 espaces stockages



Plans & Surfaces RDC

Le RDC se compose:

- 2 grandes salles d'exposition
- Une piscine commune
- Une salle de sport commune



Plans & Surfaces RDC



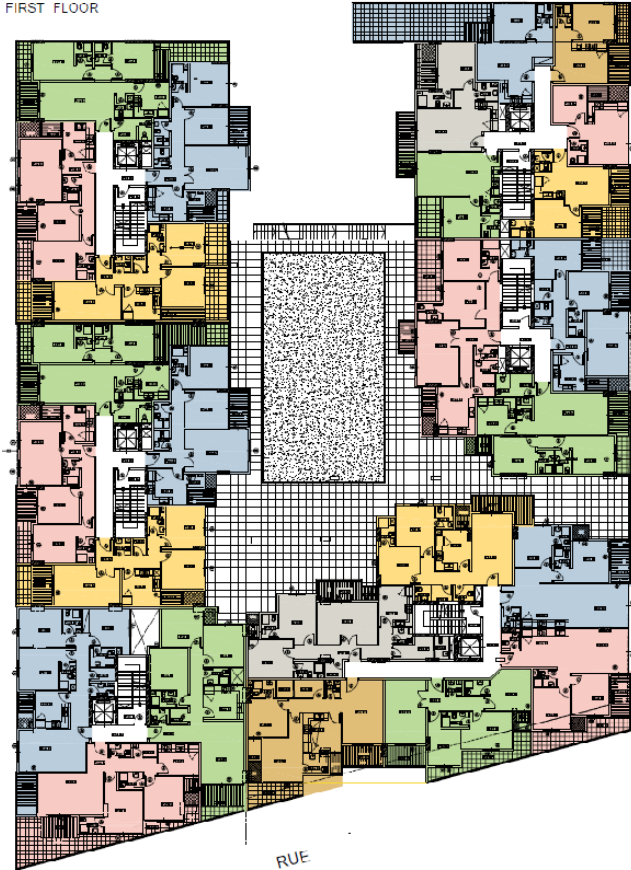
Plans & Surfaces

1^{ER} Etage

1^{er} étage:

- Espaces verts
- 6 blocs d'appartements/studios:
 - Bloc A de 97 m² à 114 m²
 - Bloc B de 97 m² à 112 m²
 - Bloc C de 113 m² à 121 m²
 - Bloc D de 92 m² à 110 m²
 - Bloc E de 105 m² à 121 m²
 - Bloc F de 45 m² à 81 m²

FIRST FLOOR



Plans & Surfaces

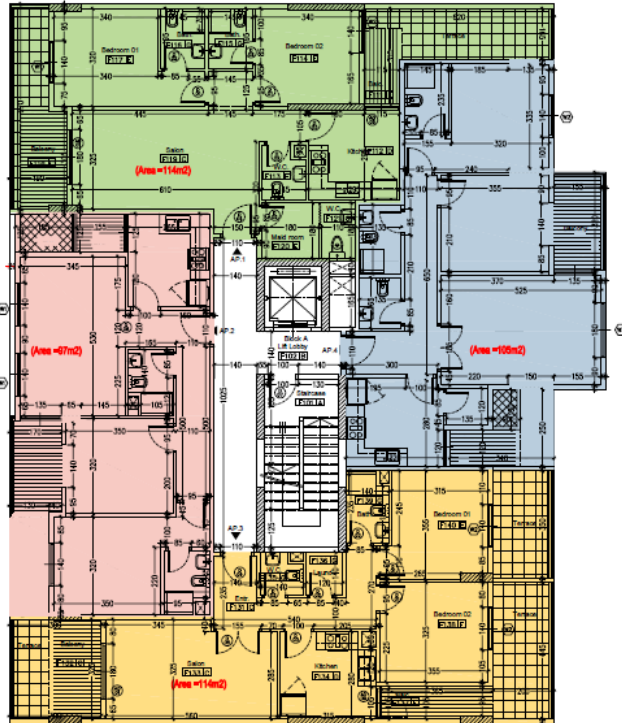
1^{ER} Etage



BLOC A – 1^{er} étage

BLOCK A - 1st Floor - Apartment - 1	
Apartment Area = 87m ²	
Staircase + 1 Elevator = 11 m ²	
TOTAL AREA=	114 m²

BLOCK A - 1st Floor - Apartment - 4	
Apartment Area = 90m ²	
Staircase + 1 Elevator = 12 m ²	
Terrace = 3 m ²	
TOTAL AREA=	105 m²



BLOCK A - 1st Floor - Apartment - 2	
Apartment Area = 85m ²	
Staircase + 1 Elevator = 10 m ²	
Terrace = 4 m ²	
TOTAL AREA=	87 m²

BLOCK A - 1st Floor - Apartment - 3	
Apartment Area = 85m ²	
Staircase + 1 Elevator = 10 m ²	
Terrace = 21 m ²	
TOTAL AREA=	114 m²

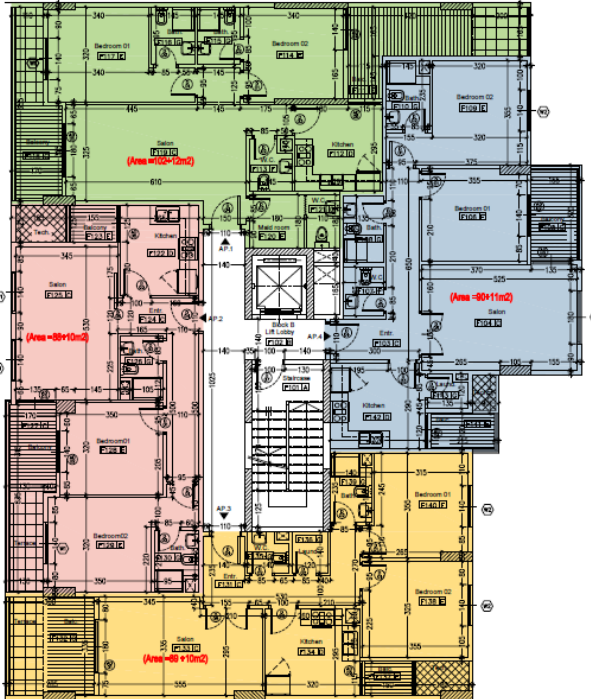
4 appartements 97, 105 et 114 m²:

- Salon / salle à manger
- 2 Chambres
- 1/2 salles de bain
- Toilette visiteur
- Cuisine
- Buanderie / chambre de nounou
- 2 Balcons/ Terrasses

BLOC B - 1^{er} étage

BLOCK B - 1ST Floor - Apartment - 1
Apartment Area = 53m ² Staircase + 1 Elevator = 12 m ²
TOTAL AREA= 112 m²

BLOCK B - 1ST Floor - Apartment - 4
Apartment Area = 90m ² Staircase + 1 Elevator = 11 m ²
TOTAL AREA= 101 m²



4 appartements 97, 99, 101 et 112 m²:

- Salon / salle à manger
- 2 Chambres
- 1/2 salles de bain
- Toilette visiteur
- Cuisine
- Buanderie / chambre de nounou
- 2 Balcons / Terrasses

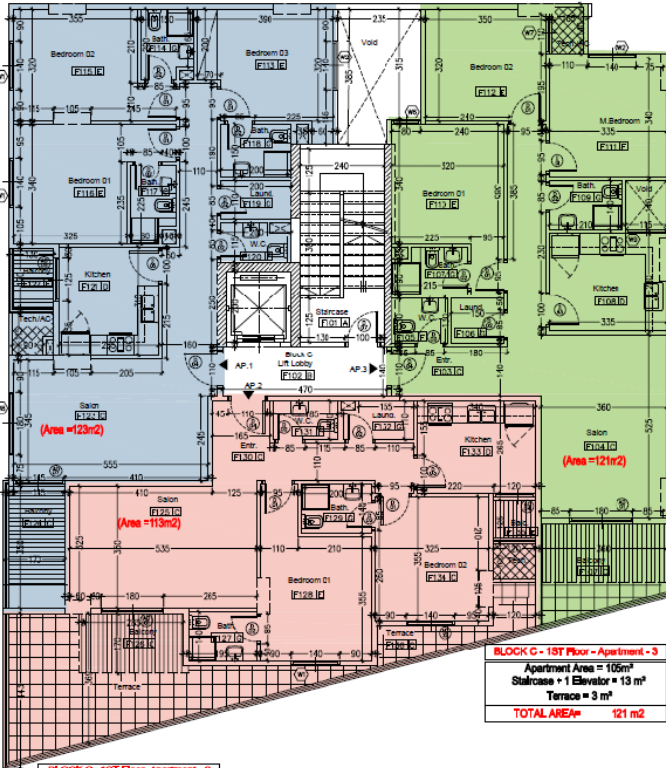
BLOCK B - 1ST Floor - Apartment - 2
Apartment Area = 53m ² Staircase + 1 Elevator = 10 m ²
TOTAL AREA= 87 m²

BLOCK B - 1ST - Apartment - 3
Apartment Area = 84m ² Staircase + 1 Elevator = 10 m ² Terrace = 5 m ²
TOTAL AREA= 99 m²

BLOC C – 1^{ER} étage

BLOCK C - 1ST Floor - Apartment - 1

Apartment Area = 108m²
Staircase + 1 Elevator = 13 m²
Terrace = 2 m²
TOTAL AREA = 123 m²



BLOCK C - 1ST Floor - Apartment - 3

Apartment Area = 105m²
Staircase + 1 Elevator = 13 m²
Terrace = 3 m²
TOTAL AREA = 121 m²

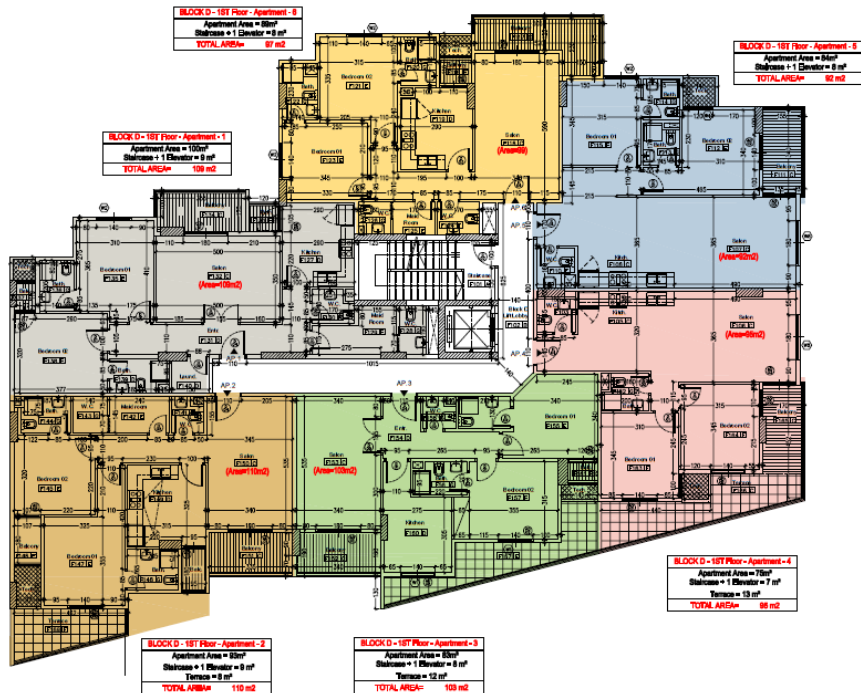
BLOCK C - 1ST Floor - Apartment - 2

Apartment Area = 87m²
Staircase + 1 Elevator = 11 m²
Terrace = 15m²
TOTAL AREA = 113 m²

3 appartements 113, 121 et 123 m²:

- Salon / salle à manger
- 2 / 3 Chambres
- 2 / 3 salles de bain
- Toilette visiteur
- Cuisine
- Buanderie / chambre de nounou
- 1 / 2 Balcons

BLOC D - 1^{ER} étage



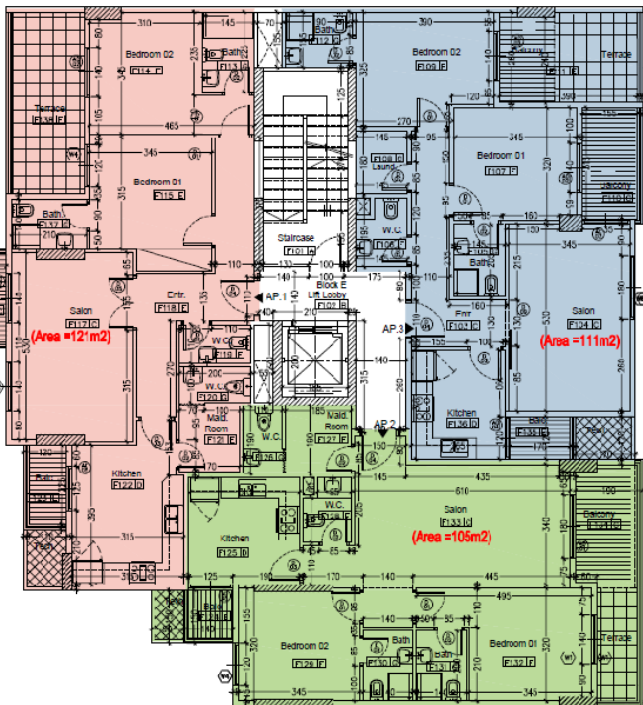
6 appartements 92, 95, 97, 103, 109 et 110m²:

- Salon / salle à manger
- 2 Chambres
- 1/2 salles de bain
- Toilette visiteur
- Cuisine
- Buanderie / chambre de nounou
- 1/2 Balcons

BLOC E - 1^{ER} étage

BLOCK E - 1ST Floor - Apartment - 1
 Apartment Area = 96m²
 Staircase + 1 Elevator = 12 m²
 Terrace = 11 m²
TOTAL AREA= 121m²

BLOCK E - 1ST Floor - Apartment - 3
 Apartment Area = 92m²
 Staircase + 1 Elevator = 12 m²
 Terrace=7 m²
TOTAL AREA= 111m²



BLOCK E - 1ST Floor - Apartment - 2
 Apartment Area = 89m²
 Staircase + 1 Elevator = 11 m²
 Terrace=5m²
TOTAL AREA= 105 m²

3 appartements 105, 111 et 121 m²:

- Salon / salle à manger
- 2 Chambres
- 1/2 salles de bain
- Toilette visiteur
- Cuisine
- Buanderie / chambre de nounou
- 2 Balcons

BLOC F - 1^{ER} étage

BLOCK F - 1ST Floor - Studio - 6
Apartment Area = 45m ²
Salon + 1 Elevator = 7 m ²
Terrace = 28 m ²
TOTAL AREA = 80 m²

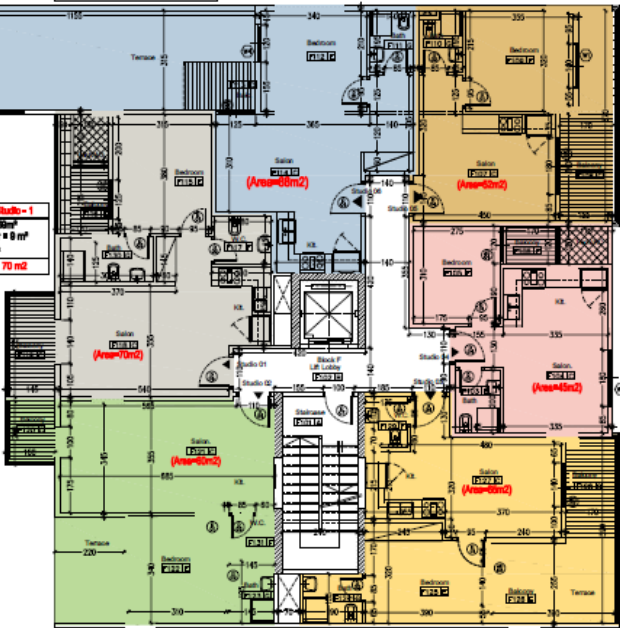
BLOCK F - 1ST Floor - Studio - 5
Apartment Area = 40m ²
Salon + 1 Elevator = 7 m ²
Terrace = 5 m ²
TOTAL AREA = 52 m²

BLOCK F - 1ST Floor - Studio - 1
Apartment Area = 50m ²
Salon + 1 Elevator = 5 m ²
Terrace = 2 m ²
TOTAL AREA = 70 m²

BLOCK F - 1ST Floor - Studio - 4
Apartment Area = 30m ²
Salon + 1 Elevator = 6 m ²
TOTAL AREA = 46 m²

BLOCK F - 1ST Floor - Studio - 2
Apartment Area = 40m ²
Salon + 1 Elevator = 7 m ²
Terrace = 7 m ²
TOTAL AREA = 60 m²

BLOCK F - 1ST Floor - Studio - 3
Apartment Area = 50 m ²
Salon + 1 Elevator = 8 m ²
Terrace = 7 m ²
TOTAL AREA = 65 m²



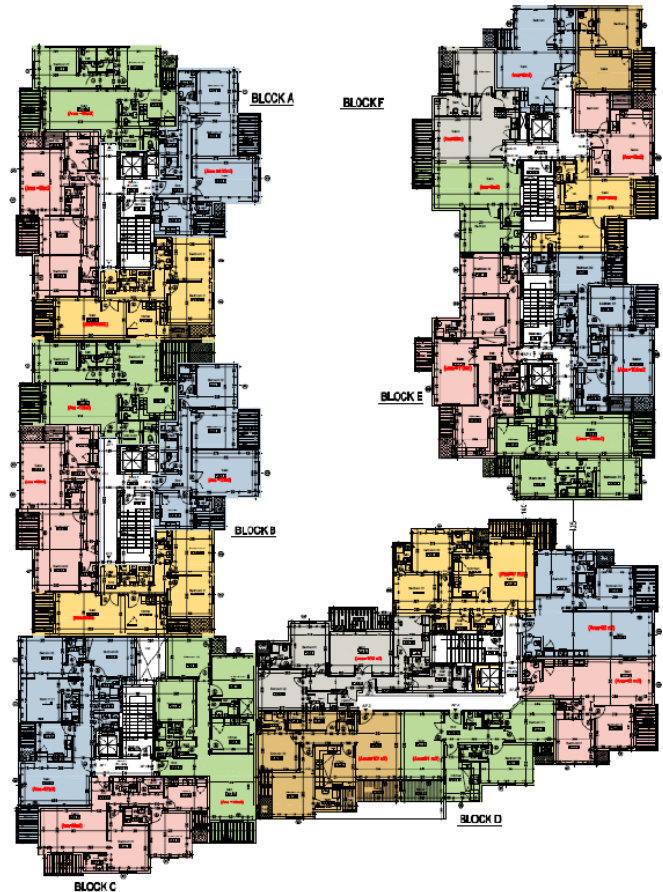
6 studios 45, 52, 60, 65, 70 et 45+36 m² terrasse:

- Salon / salle à manger
- 1 Chambre
- 1 salles de bain
- Cuisine Américaine
- 1/2 Balcons

Plans & Surfaces Etages Typiques

Les étages typiques du 2^{eme}
jusqu'à 4^{eme} se composent de:

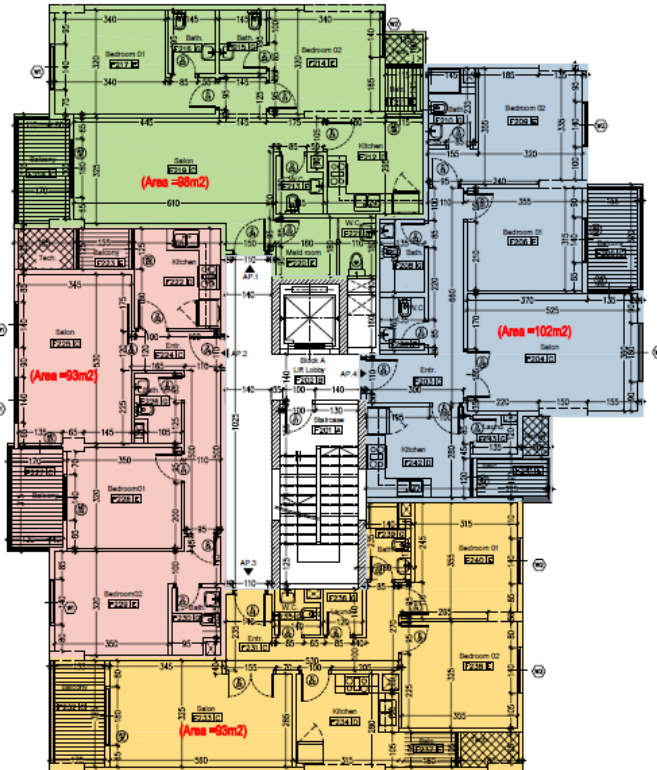
- 6 blocs d'appartements/studios:
 - Bloc A de 93 m² à 102 m²
 - Bloc B de 93 m² à 105 m²
 - Bloc C de 98 m² à 121 m²
 - Bloc D de 82 m² à 109 m²
 - Bloc E de 100 m² à 110 m²
 - Bloc F de 45 m² à 68 m²



BLOC A - 2^{eme} au 4^{eme} étage

BLOCK A - 2ND Floor - Apartment - 1
Apartment Area = 87m²
Staircase + 1 Elevator = 11 m²
TOTAL AREA= 98 m²

BLOCK A - 2ND Floor - Apartment - 4
Apartment Area = 90m²
Staircase + 1 Elevator = 12 m²
TOTAL AREA= 102 m²



BLOCK A - 2ND - Apartment - 3
Apartment Area = 83m²
Staircase + 1 Elevator = 10 m²
TOTAL AREA= 93 m²

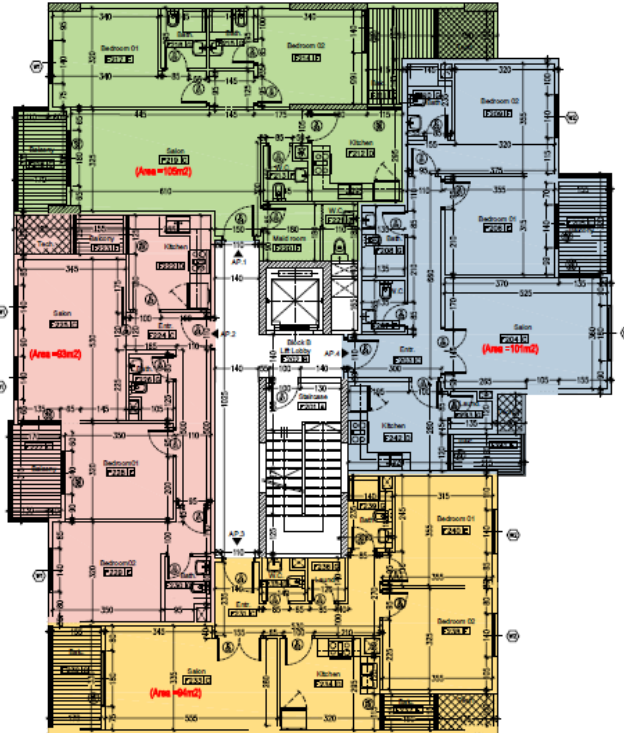
4 appartements 93, 98 et 102 m²:

- Salon / salle à manger
- 2 Chambres
- 1/2 salles de bain
- Toilette visiteur
- Cuisine
- Buanderie / chambre de nounou
- 2 Balcons

BLOC B - 2^{eme} au 4^{eme} étage

BLOCK B - 2ND Floor - Apartment - 1
Apartment Area = 83m ²
Staircase + 1 Elevator = 12 m ²
TOTAL AREA= 105 m2

BLOCK B - 2ND Floor - Apartment - 4
Apartment Area = 83m ²
Staircase + 1 Elevator = 11 m ²
TOTAL AREA= 101 m2



BLOCK B - 2ND Floor - Apartment - 2
Apartment Area = 83m ²
Staircase + 1 Elevator = 10 m ²
TOTAL AREA= 90 m2

BLOCK B - 2ND Floor - Apartment - 3
Apartment Area = 84m ²
Staircase + 1 Elevator = 10 m ²
TOTAL AREA= 94 m2

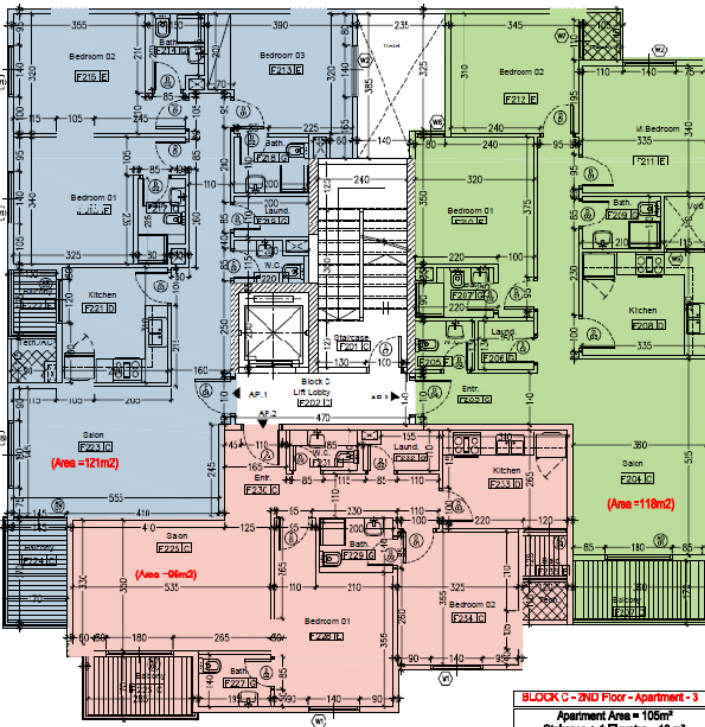
4 appartements 93, 102 et 105 m²:

- Salon / salle à manger
- 2 Chambres
- 1/2 salles de bain
- Toilete visiteur
- Cuisine
- Buanderie / chambre de nounou
- 2 Balcons

BLOC C – 2^{eme} au 4^{eme} étage

BLOCK C - 2ND Floor - Apartment - 1

Apartment Area = 108m²
Staircase + 1 Elevator = 13 m²
TOTAL AREA= 121 m²



BLOCK C - 2ND Floor - Apartment - 3

Apartment Area = 105m²
Staircase + 1 Elevator = 13 m²
TOTAL AREA= 118 m²

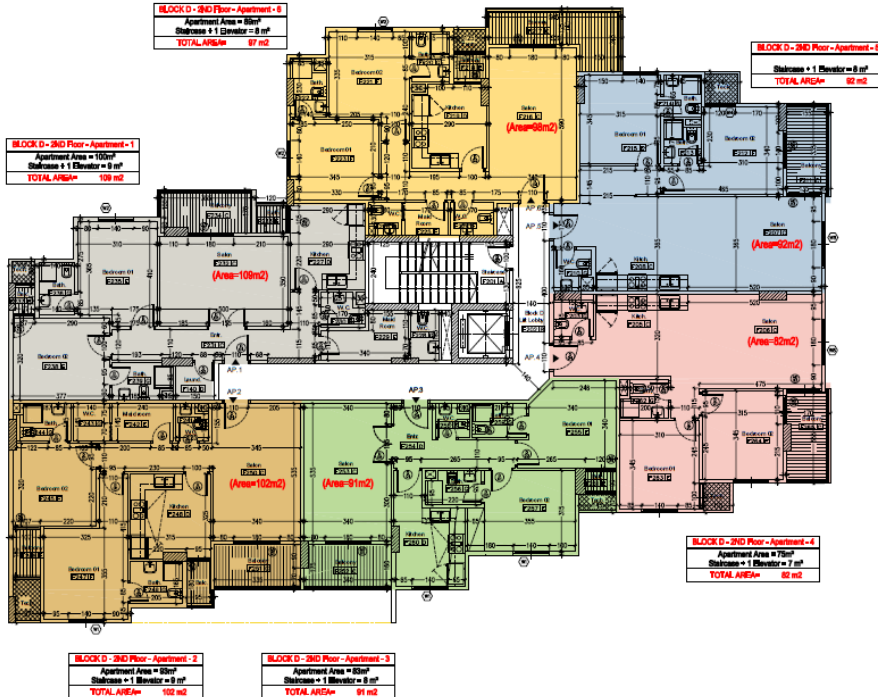
BLOCK C - 2ND Floor - Apartment - 2

Apartment Area = 87m²
Staircase + 1 Elevator = 11 m²
TOTAL AREA= 98 m²

3 appartements 98, 118 et 121 m²:

- Salon / salle à manger
- 2 / 3 Chambres
- 2 / 3 salles de bain
- Toilette visiteur
- Cuisine
- Buanderie / chambre de nounou
- 1 / 2 Balcons

BLOC D - 2^{eme} au 4^{eme} étage



- 2 appartements 82 et 92 m²:
 - Salon
 - 2 Chambres autonomes
 - Toilette visiteur
 - Cuisine Américaine
 - Balcon
- 4 appartements 91, 97, 102 et 109m²:
 - Salon / salle à manger
 - 2 Chambres
 - 1/2 salles de bain
 - Toilette visiteur
 - Cuisine
 - Buanderie / chambre de nounou
 - 1/2 Balcons

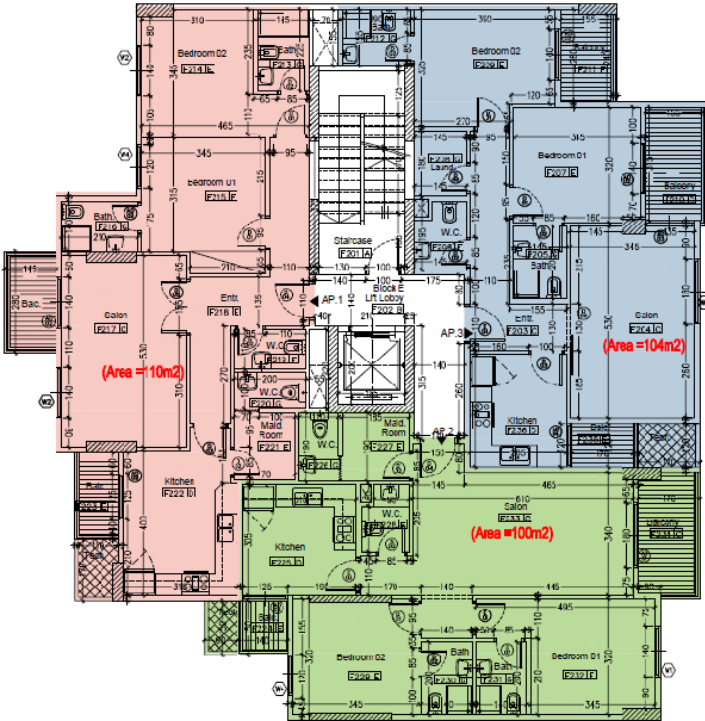
BLOC E - 2^{eme} au 4^{eme} étage

BLOCK E - 2ND Floor - Apartment - 1

Apartment Area = 98m²
Staircase + 1 Elevator = 12 m²
TOTAL AREA= 110m²

BLOCK E - 2ND Floor - Apartment - 3

Apartment Area = 92m²
Staircase + 1 Elevator = 12 m²
TOTAL AREA= 104 m²



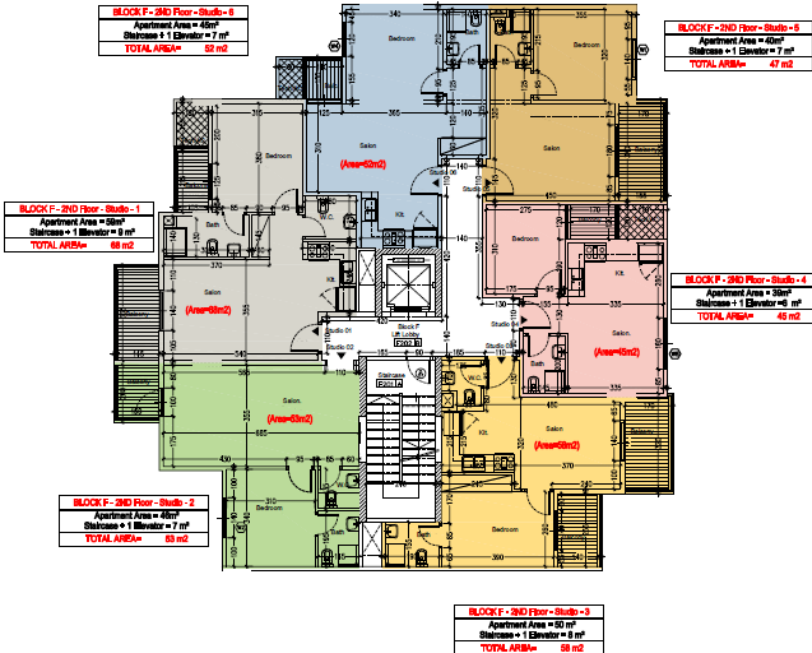
BLOCK E - 2ND Floor - Apartment - 2

Apartment Area = 89m²
Staircase + 1 Elevator = 11 m²
TOTAL AREA= 100 m²

3 appartements 100, 104
et 110 m²:

- Salon / salle à manger
- 2 Chambres
- 1/2 salles de bain
- Toilette visiteur
- Cuisine
- Buanderie / chambre de nounou
- 2 Balcons

BLOC F - 2^{eme} au 4^{eme} étage



6 studios 45, 47, 52, 58 et 68 m²:

- Salon / salle à manger
- 1 Chambre
- 1 salles de bain
- Cuisine Américaine
- 1/2 Balcons
- Toilette visiteur (studios 1, 2 & 3)

Plans & Surfaces Etages Penthouses

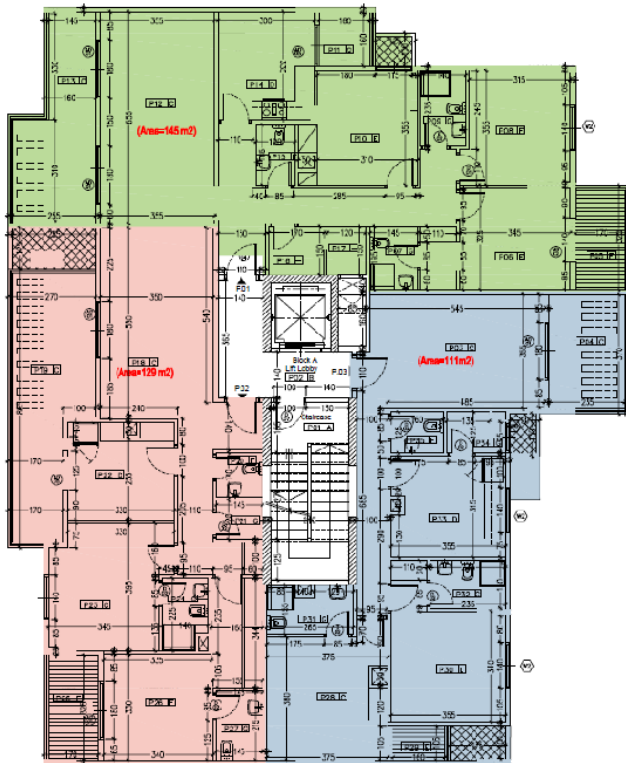
Le 5^{ème} étage, penthouses, se compose de:

- 6 blocs d'appartements:
 - Bloc A de 111 m² à 145 m²
 - Bloc B de 111 m² à 151 m²
 - Bloc C de 167 m² et 175 m²
 - Bloc D de 100 m² à 146 m²
 - Bloc E de 128 m² et 154 m²
 - Bloc F de 133 m² et 156 m²



BLOC A - étage penthouse

BLOCK A - Penthouse -1
Apartment Area = 150m²
Staircase + 1 Elevator = 13 m²
TOTAL AREA = 163 m²



3 appartements 111, 129 et 145 m²:

- Salon / salle à manger
- 2 / 3 Chambres autonomes
- 2 / 3 salles de bain
- Toilette visiteur
- Cuisine
- Buanderie / chambre de nounou
- Balcons
- Terrasse

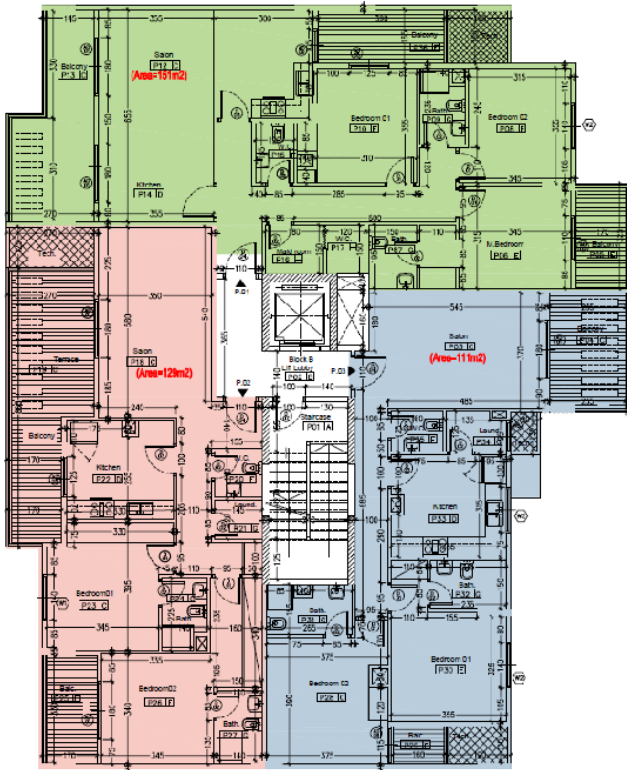
BLOCK A - Penthouse - 2
Apartment Area = 116m²
Staircase + 1 Elevator = 11 m²
TOTAL AREA = 129 m²

BLOCK A - Penthouse - 3
Apartment Area = 101m²
Staircase + 1 Elevator = 10 m²
TOTAL AREA = 111 m²

BLOC B - étage penthouse

BLOCK B - Penthouse - 1

Apartment Area = 130m²
Staircase + 1 Elevator = 13 m²
TOTAL AREA= 151 m²



3 appartements 111, 129 et 151 m²:

- Salon / salle à manger
- 2 / 3 Chambres autonomes
- 2 / 3 salles de bain
- Toilette visiteur
- Cuisine
- Buanderie / chambre de nounou
- Balcons
- Terrasse

BLOCK B - Penthouse - 2

Apartment Area = 115m²
Staircase + 1 Elevator = 11 m²
TOTAL AREA= 126 m²

BLOCK B - Penthouse - 3

Apartment Area = 90m²
Staircase + 1 Elevator = 10 m²
TOTAL AREA= 111 m²

BLOC C - étage penthouse

BLOCK C - Penthouse - 1

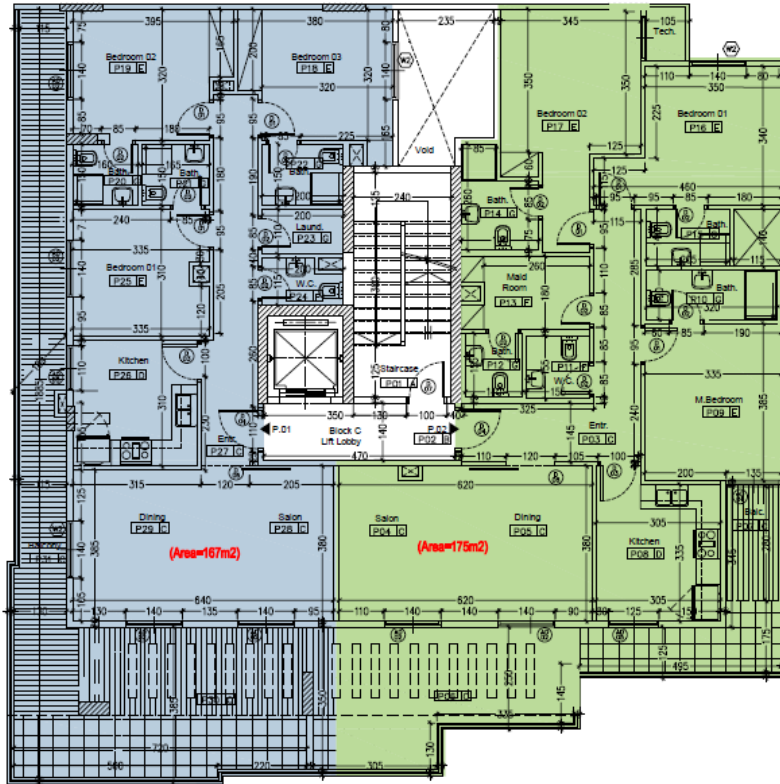
Apartment Area = 137m²
Staircase + 1 Elevator = 18 m²
Terrace = 12 m²

TOTAL AREA= 187 m²

BLOCK C - Penthouse - 2

Apartment Area = 143m²
Staircase + 1 Elevator = 19 m²
Terrace = 13 m²

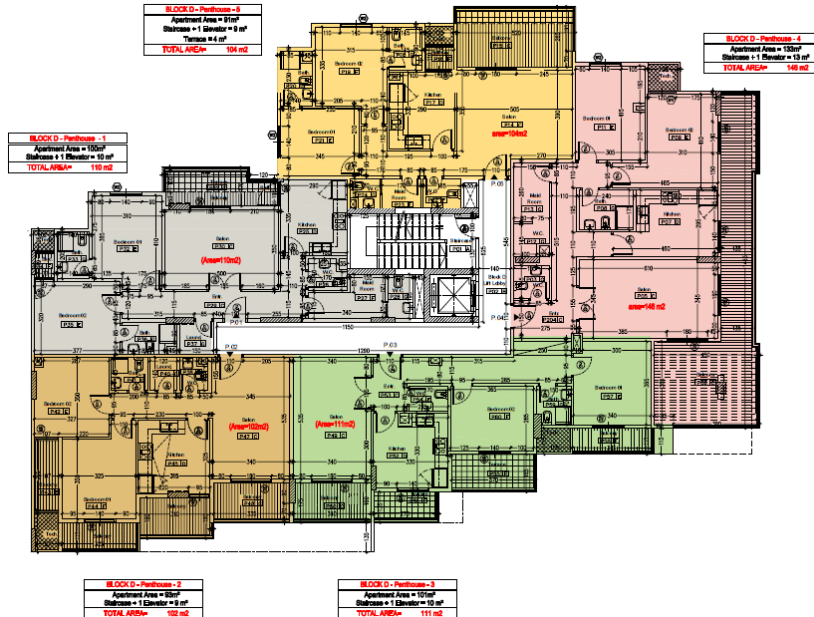
TOTAL AREA= 175 m²



2 appartements 167 et 175 m²:

- Salon / salle à manger
- 2 / 3 Chambres autonomes
- 2 / 3 salles de bain
- Toilette visiteur
- Cuisine
- Buanderie / chambre de nounou
- Balcons
- Terrasse

BLOC D - étage penthouse



5 appartements 104, 110, 112 et 146 m²:

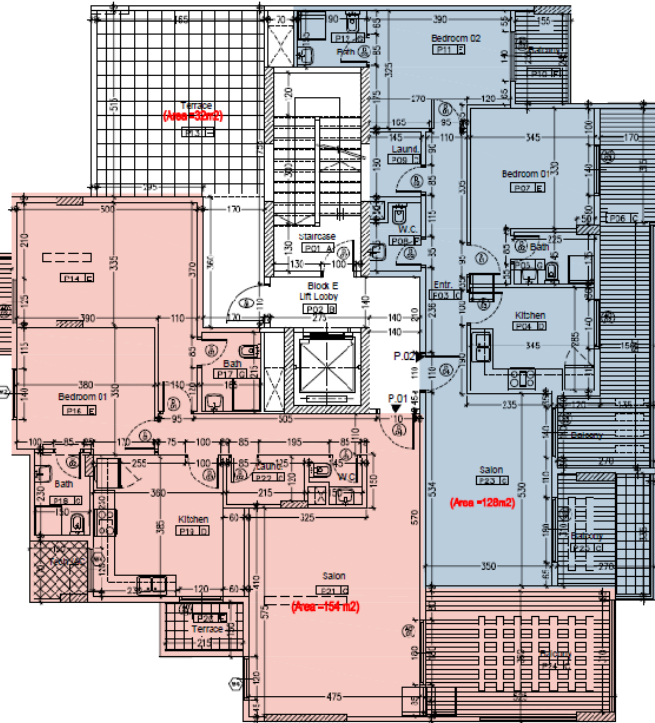
- Salon / salle à manger
- 2 Chambres autonomes
- 3 salles de bain
- Toilette visiteur
- Cuisine
- Buanderie / chambre de nounou
- Balcons
- Terrasse

BLOC E - étage penthouse

BLOCK E - Penthouse - 2

Apartment Area = 113m²
Staircase + 1 Elevator = 15 m²

TOTAL AREA= 128m²



BLOCK E - Penthouse - 1

Apartment Area = 136m²
Staircase + 1 Elevator = 18 m²

TOTAL AREA= 154 m²

2 appartements 128 et 154 m²:

- Salon / salle à manger
- 2 Chambres autonomes
- 3 salles de bain
- Toilette visiteur
- Cuisine
- Buanderie / chambre de nounou
- Balcons
- Terrasse

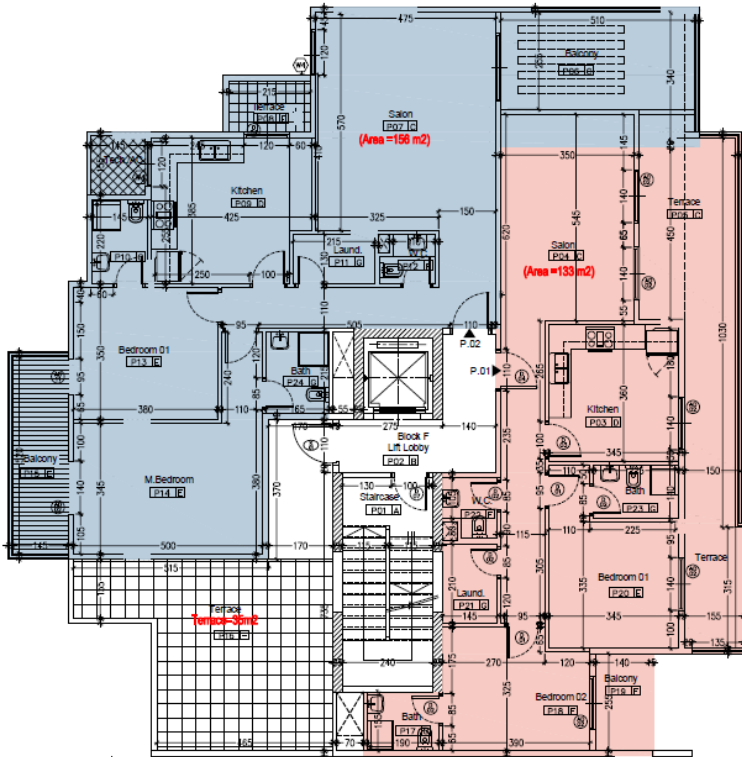
BLOC F - étage penthouse

BLOCK F - Penthouse - 2

Apartment Area = 137m²

Staircase + 1 Elevator = 19 m²

TOTAL AREA= 156 m²



BLOCK F - Penthouse - 1

Apartment Area = 117m²

Staircase + 1 Elevator = 16 m²

TOTAL AREA= 133 m²

2 appartements 133 et 156 m²:

- Salon / salle à manger
- 2 Chambres autonomes
- 3 salles de bain
- Toilette visiteur
- Cuisine
- Buanderie / chambre de nounou
- Balcons
- Terrasse

Descriptif de l'Immeuble



















BOYOOT

IMMOBILIER



+225 07 09 107 109



Marcory, Zone 4, Rue Pierre & Marie Curie, Immeuble Bo Concept, 2eme étage, Abidjan

www.boyootimmobilier.com



info@boyootimmobilier.com